

www.StandardNetworking.com

a division of GIGA_CORP

[Giga-Corp](#) > [Services](#) > My First Network

Page | [01](#) | [02](#) | [03](#) | [04](#) | [05](#) | [06](#) | [07](#) | [08](#) | [09](#) | [10](#) | [11](#) | [12](#) |



Coleman 2 Burner Propane Stove
 Two 8,000 BTU burners
 Enough stovetop space for a large pan or griddle
 Boils a quart of water in 5.5 minutes
 Works from bulk cylinder with accessory hose (not included)
 1 cylinder of Coleman propane powers both burners for 1.3 hours on high, 5.5 hours on low



Camp Chef Double Burner High/Low Combo | DH-170LW
 This beefed up Outdoorsman stove will make all your large capacity cooking a breeze. If it is boiling seafood or spaghetti for the neighbors you have found the stove you need. This is a rugged stove built with our durable cloverleaf cooking surface pattern. Designed for a varied range of cooking: one 75,000 BTU/hr T-max burner for large capacity cooking and one 30,000 BTU/hr all - purpose burner for more delicate cooking.



Ford C.A.R.T. car

Commerical and industrial products are driven by performance and robust reliability.



Ford Focus

Home products are scaled down versions, driven by cost cutting.

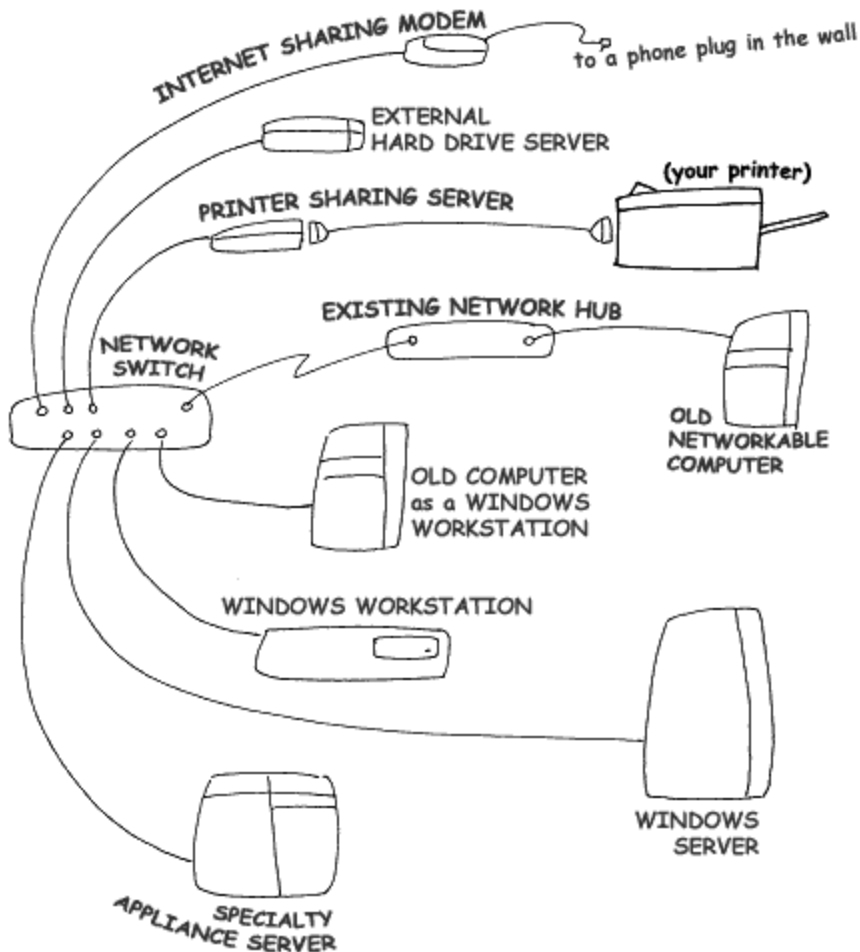
You get what you pay for.

Page | [01](#) | [02](#) | [03](#) | [04](#) | [05](#) | [06](#) | [07](#) | [08](#) | [09](#) | [10](#) | [11](#) | [12](#) |

1.514.990.7787

www.StandardNetworking.com

a division of GIGA_CORP

 Page | [01](#) | [02](#) | [03](#) | [04](#) | [05](#) | [06](#) | [07](#) | [08](#) | [09](#) | [10](#) | [11](#) | [12](#) |


A node is a point on the wired network.
 this can be many devices.
 a computer (includes server)
 a printer
 a backup drive
 a switch
 a router
 etc.

 Page | [01](#) | [02](#) | [03](#) | [04](#) | [05](#) | [06](#) | [07](#) | [08](#) | [09](#) | [10](#) | [11](#) | [12](#) |

www.StandardNetworking.com

a division of GIGA_CORP

Page | [01](#) | [02](#) | [03](#) | [04](#) | [05](#) | [06](#) | [07](#) | [08](#) | [09](#) | [10](#) | [11](#) | [12](#) |



Bad: Ends crimped to CAT5 solid copper. The wires in walls are made with very thick copper, and plugs are not designed to eat into them, as they have trouble biting into solid copper.



Good: Ends on IBDN wall plates. This is where a wall wire is supposed to be used, from end to end. Short and soft patch cables connect nodes to the wall wire.

If your cables were not installed by a certified service, you will need to get your cabling re-certified for data readiness.

Time to implement: 1-2 days.

-C\$85.00-120.00 per node drop from station to demarkation point.

Page | [01](#) | [02](#) | [03](#) | [04](#) | [05](#) | [06](#) | [07](#) | [08](#) | [09](#) | [10](#) | [11](#) | [12](#) |

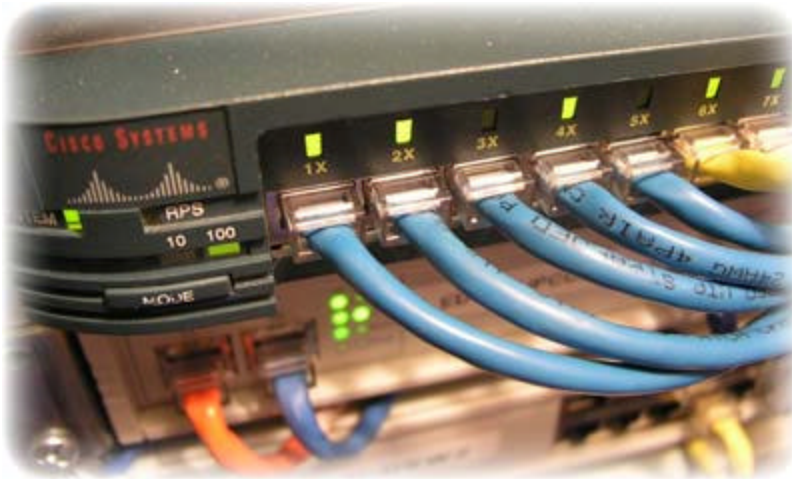
1.514.990.7787

- > [privacy and legal statement](#)
- > [confidentialité et énoncé juridique](#)

www.StandardNetworking.com

a division of GIGA_CORP

Page | [01](#) | [02](#) | [03](#) | [04](#) | [05](#) | [06](#) | [07](#) | [08](#) | [09](#) | [10](#) | [11](#) | [12](#) |



A switch is what all nodes plug into, one by one. Simplified, it appears as some sort of connection box or "extension multiplier", but is far more complex, as it works similar to a real-world post office system. A commercial grade switch ensures speeds and reliability, and capable of isolating a network problem (ie., one noisy node).

Time to implement: 1 day.

C\$598.00 Dell PowerConnect 3324, with 2 Gbe ports
http://www1.us.dell.com/content/products/productdetails.aspx/pwcnt_3324
C\$1064.00 HP ProCurve Networking Switch 2524, with HP ProCurve 100/1000-T Transceiver (J4834A)
<http://www.hp.com/rnd/products/switches/switch2524-2512/summary.htm>
C\$1496.00 Cisco Catalyst 2950-24 - Switch, with 1000base-t Gbic Ws - g5483
<http://www.cisco.com/en/US/products/hw/switches/ps628/ps627/index.html>

Page | [01](#) | [02](#) | [03](#) | [04](#) | [05](#) | [06](#) | [07](#) | [08](#) | [09](#) | [10](#) | [11](#) | [12](#) |

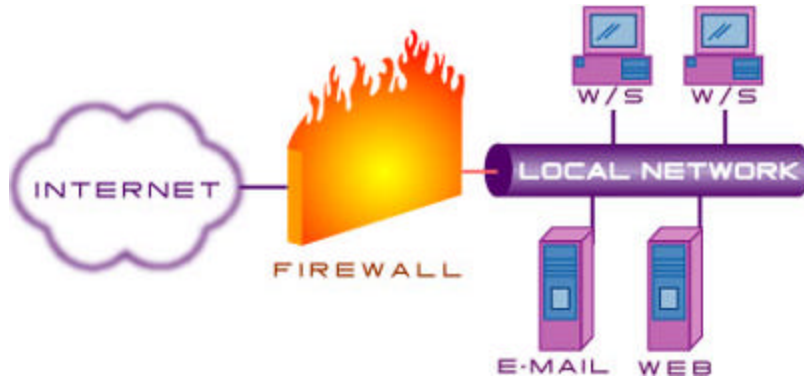
1.514.990.7787

> [privacy and legal statement](#)
> [confidentialité et énoncé juridique](#)

www.StandardNetworking.com

a division of GIGA_CORP

Page | [01](#) | [02](#) | [03](#) | [04](#) | [05](#) | [06](#) | [07](#) | [08](#) | [09](#) | [10](#) | [11](#) | [12](#) |



A router can be used to share a single internet connection from a high speed modem. When a router is connected to a switch, all allowable nodes can have incoming and outgoing internet access. A router is also a firewall to protect against incoming intrusions, and allow connections only by permission. A router can be complex enough to restrict, censor, and spy on nodes. Commercial grade routers are designed for security and reliability.

Time to implement: 1 day.

C\$900.00+ SonicWALL TZ 170 25 Node 01-SSC- 5558
 Content Filtering Service Standard Edition For SonicWALL TZ 170 01-SSC- 5505
<http://www.sonicwall.com/products/tz170.html>
 (Wireless) SonicWALL SOHO TZW 25-User 01-SSC-5350
 Content Filtering Service Standard Edition For 25 Node SonicWALL Products 01-SSC-5502
<http://www.sonicwall.com/products/sohotzw.html>

Page | [01](#) | [02](#) | [03](#) | [04](#) | [05](#) | [06](#) | [07](#) | [08](#) | [09](#) | [10](#) | [11](#) | [12](#) |

1.514.990.7787

> [privacy and legal statement](#)
 > [confidentialité et énoncé juridique](#)

www.StandardNetworking.com

a division of GIGA_CORP

Page | [01](#) | [02](#) | [03](#) | [04](#) | [05](#) | [06](#) | [07](#) | [08](#) | [09](#) | [10](#) | [11](#) | [12](#) |

Obselete and retired equipment.	Computers made with Low-quality and Low-cost components	Computers made with Un-tested components	Computers made with tested components	Computers made with failover components	Computers made with non-stop failover components
---------------------------------	---	--	---------------------------------------	---	--



Units more than 3 yrs old.	Nameless whiteboxes.	Extreme Gaming computers	Major ODM Home PC's.	Workstations and Servers.	Clusters.
----------------------------	----------------------	--------------------------	----------------------	---------------------------	-----------

A Like all cars, trucks, buses, and freighters, they are all motor vehicles that run on wheels. They are all surprisingly different, yet still all surprisingly "the same".

Page | [01](#) | [02](#) | [03](#) | [04](#) | [05](#) | [06](#) | [07](#) | [08](#) | [09](#) | [10](#) | [11](#) | [12](#) |

1.514.990.7787

- > [privacy and legal statement](#)
- > [confidentialité é et énoncé juridique](#)

www.StandardNetworking.com

a division of GIGA_CORP

Page | [01](#) | [02](#) | [03](#) | [04](#) | [05](#) | [06](#) | [07](#) | [08](#) | [09](#) | [10](#) | [11](#) | [12](#) |



Electricity Protection is achieved with the use of a UPS, an Uninterruptable Power Supply. A UPS can keep electricity clean from spikes and surges, a common cause of computer glitching and freezes. A UPS can safely shut down a computer if there is a power outage.



Time to implement: 1 day.

C\$218.99+ APC Smart-UPS
<http://www.apc.com/products/family/index.cfm?id=165>

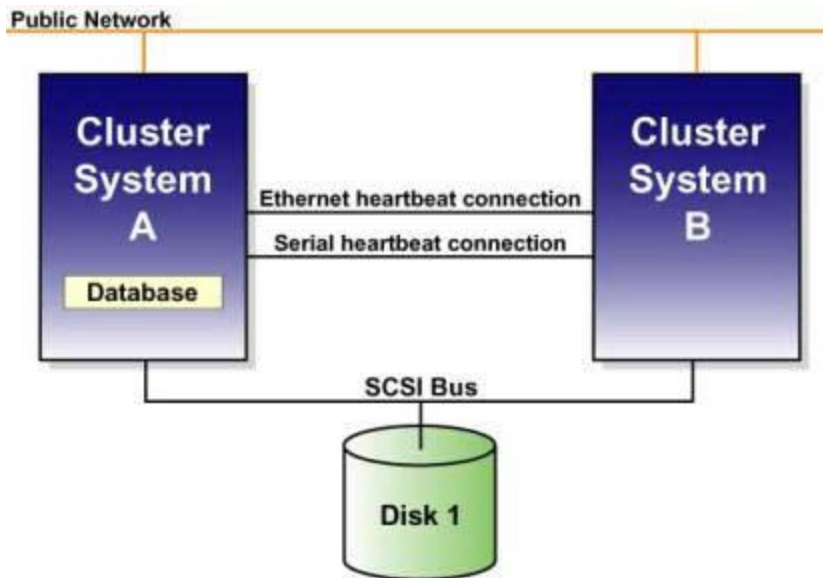
Page | [01](#) | [02](#) | [03](#) | [04](#) | [05](#) | [06](#) | [07](#) | [08](#) | [09](#) | [10](#) | [11](#) | [12](#) |

1.514.990.7787

www.StandardNetworking.com

a division of GIGA_CORP

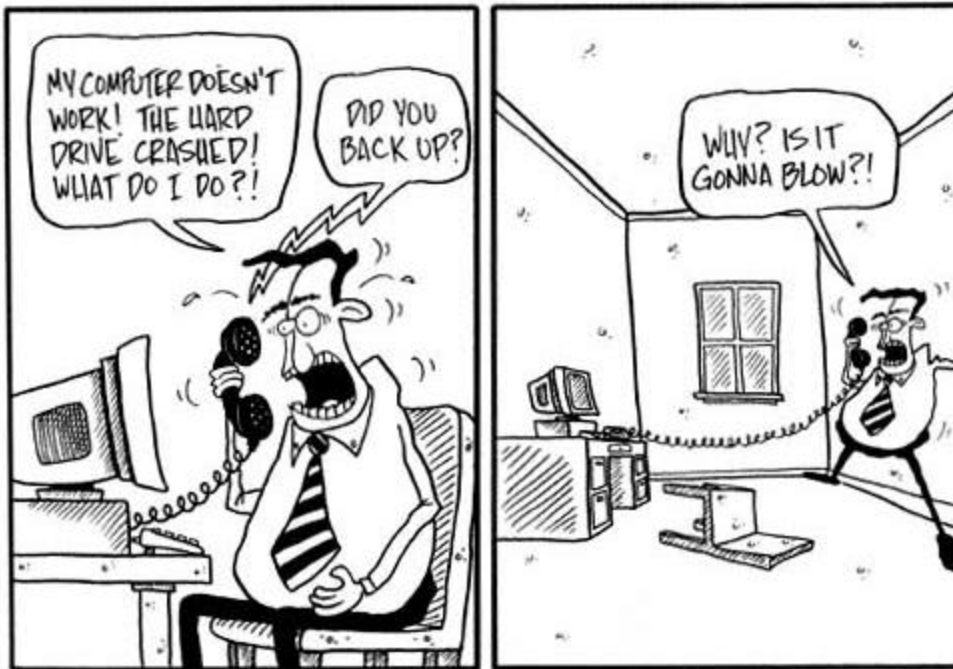
Page | [01](#) | [02](#) | [03](#) | [04](#) | [05](#) | [06](#) | [07](#) | [08](#) | [09](#) | [10](#) | [11](#) | [12](#) |



Servers are designed to deliver to many nodes that give and take from it. The importance of Reliability, Security, and Speed, are proportional to the size of the server. Computers that are not servers, cannot offer Reliability, Security, and Speed. They can't offer reliability because they contain un-tested components not designed to standards, they can't offer security because they contain no failover components, and they can't offer speed because they contain no mission-critical components. When servers can crash, some will need immediate repair. Some will need a delayed repair. Some will get back up automatically in less than 10 seconds.

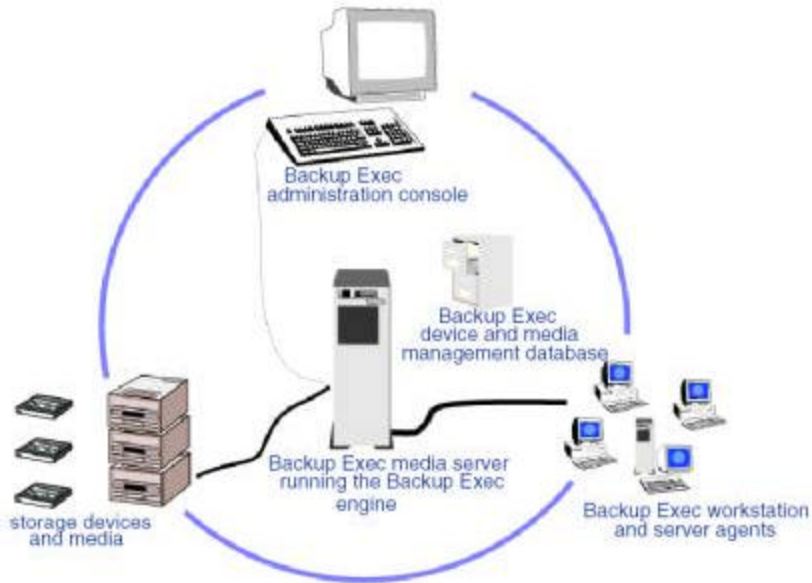
www.StandardNetworking.com

a division of GIGA_CORP



An automated backup gives peace of mind that all your lifetime data is permanently preserved and archived. Backup can be automated on both tape and other computers.

Time to implement: 1 day.



VERITAS NetBackup Server
<http://www.veritas.com/Products/www?c=product&refId=58>

Page | [01](#) | [02](#) | [03](#) | [04](#) | [05](#) | [06](#) | [07](#) | [08](#) | [09](#) | [10](#) | [11](#) | [12](#) |

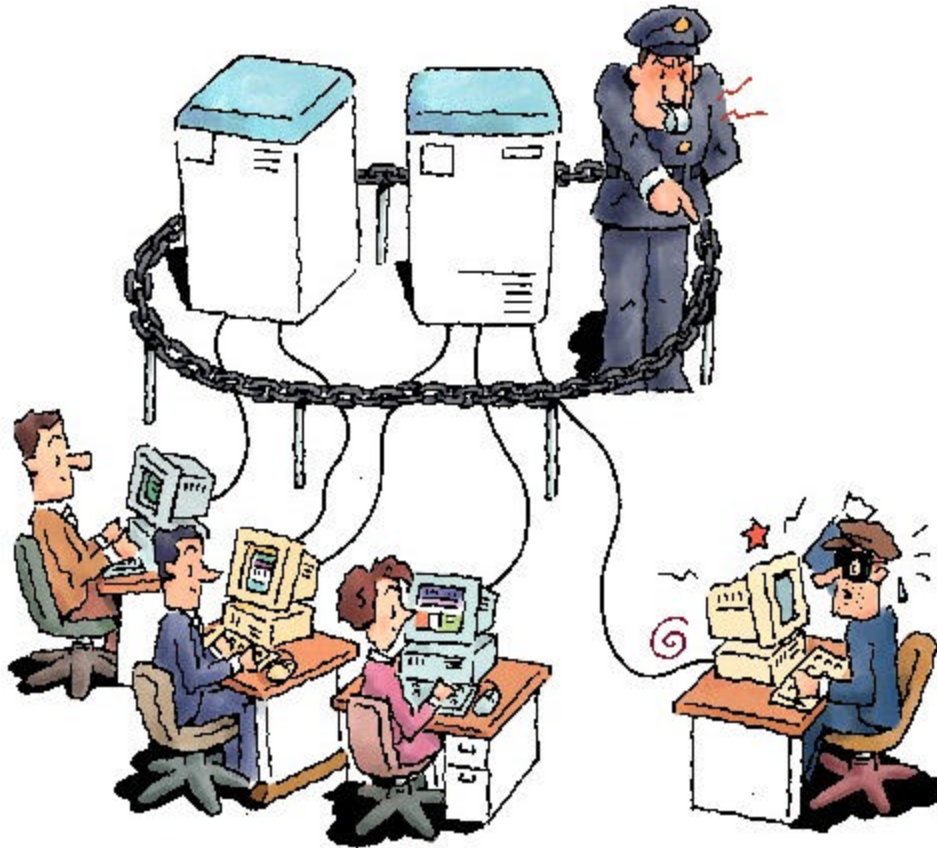
1.514.990.7787

- > [privacy and legal statement](#)
- > [confidentialité et énoncé juridique](#)

www.StandardNetworking.com

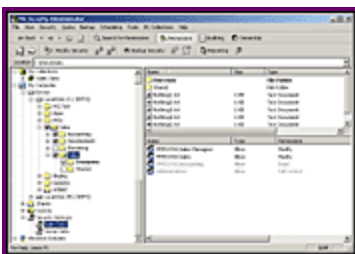
a division of GIGA_CORP

Page | [01](#) | [02](#) | [03](#) | [04](#) | [05](#) | [06](#) | [07](#) | [08](#) | [09](#) | [10](#) | [11](#) | [12](#) |



A proper network is secure, safe, and only accessible by authorized persons.

Time to implement: 1-3 days.



NetIQ's File Security Administrator delivers a complete file security management and reporting solution for your Windows 2000/Active Directory environments. This product's straightforward interface and extensive, flexible reporting features simplify tasks, such as determining who can access your file system, eliminating and preventing enterprise security holes and reporting on storage utilization. Its ActiveReporting feature pinpoints trouble spots so you can take corrective action.

NetIQ File Security Administrator
<http://www.netiq.com/products/fsa/default.asp>

 File Security Administrator

C\$1316.99+ Windows Server 2000/2003

[http://www.microsoft.com/windowsserver2003/
C\\$299.99+ Windows XP Professional](http://www.microsoft.com/windowsserver2003/C$299.99+ Windows XP Professional)
[http://www.microsoft.com/windowsxp/pro/
Symantec AntiVirus Corporate Edition](http://www.microsoft.com/windowsxp/pro/Symantec AntiVirus Corporate Edition)
<http://enterprisesecurity.symantec.com/products/products.cfm?ProductID=155>
FREE Google pop-up blocker
<http://toolbar.google.com/>
FREE Lavasoft Ad - Aware
<http://www.lavasoftusa.com/>

Page | [01](#) | [02](#) | [03](#) | [04](#) | [05](#) | [06](#) | [07](#) | [08](#) | [09](#) | [10](#) | [11](#) | [12](#) |

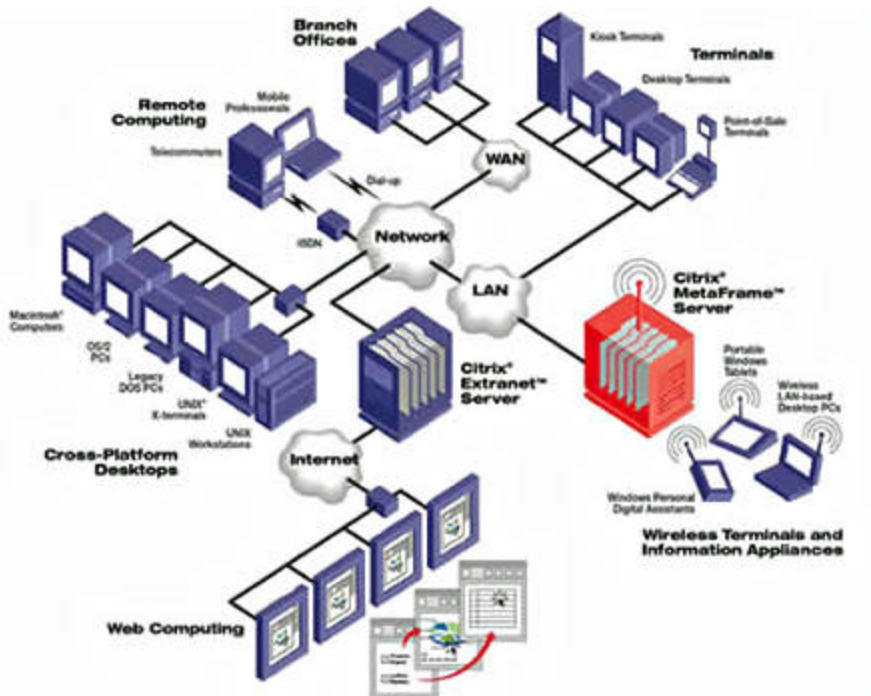
1.514.990.7787

- > [privacy and legal statement](#)
- > [confidentialité et énoncé juridique](#)

www.StandardNetworking.com

a division of GIGA_CORP

Page | [01](#) | [02](#) | [03](#) | [04](#) | [05](#) | [06](#) | [07](#) | [08](#) | [09](#) | [10](#) | [11](#) | [12](#) |



Computing Anywhere Remote Control is achieved with Citrix Metaframe. Full speed desktop computing over connections as slow as a 14.4k modem connection, great for hotels and foreign countries that have older phone lines. No programs or data are on your remote-controlling computer, allowing you to quickly and securely use any computer, anywhere in the world. This includes Mac, and PocketPC. Computing Anywhere Remote Control may be rented daily by contract.

Time to implement: 3-5 days.

Citrix Metaframe

www.StandardNetworking.com

a division of GIGA_CORP

Page | [01](#) | [02](#) | [03](#) | [04](#) | [05](#) | [06](#) | [07](#) | [08](#) | [09](#) | [10](#) | [11](#) | [12](#) |



Printers are connected to computers by being a node. Printers are not connected directly to any one computer. Home Ink Jet printers are the most expensive printers to operate, their cost-per-page can be up to \$3.00 for a single page, and are prone to break and fail often because they lack robustness. Color Laser printers have a significantly lower cost-per-page (usually under 10-cents), and are designed for high yield production runs. Employees working on a deadline often waste time idling for a page to come out from a printer, an important issue to consider when printing proofs.

Time to implement: 1 day.

US\$1299.00+ Xerox Phaser 8400

<http://www.office.xerox.com/perl-bin/product.pl?product=8400>

US\$1799.00+ HP Color LaserJet 4650

<http://h71016.www7.hp.com/dstore/SubFamMatrix.asp?ProductLineId=493&FamilyId=1313>

Page | [01](#) | [02](#) | [03](#) | [04](#) | [05](#) | [06](#) | [07](#) | [08](#) | [09](#) | [10](#) | [11](#) | [12](#) |

1.514.990.7787